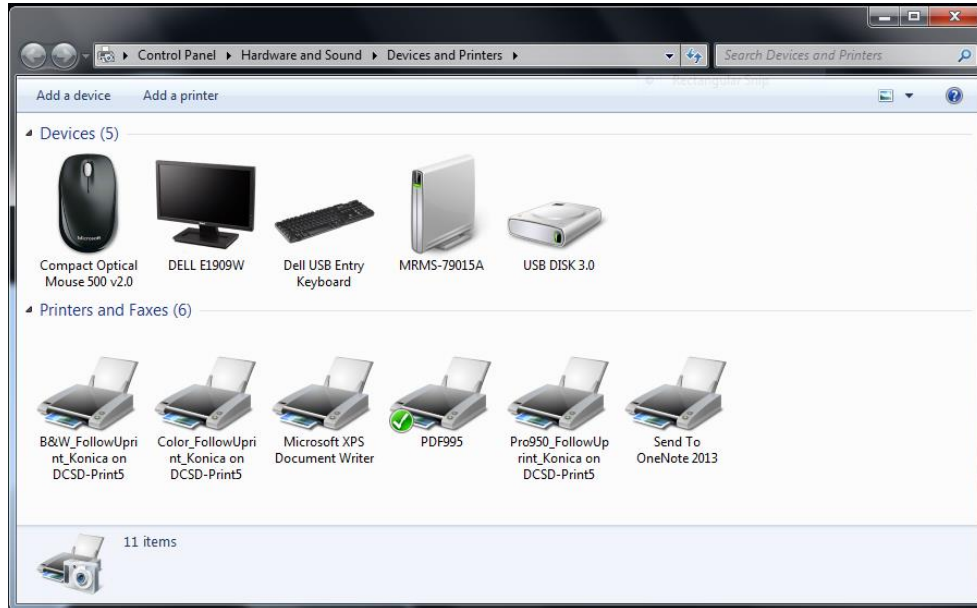
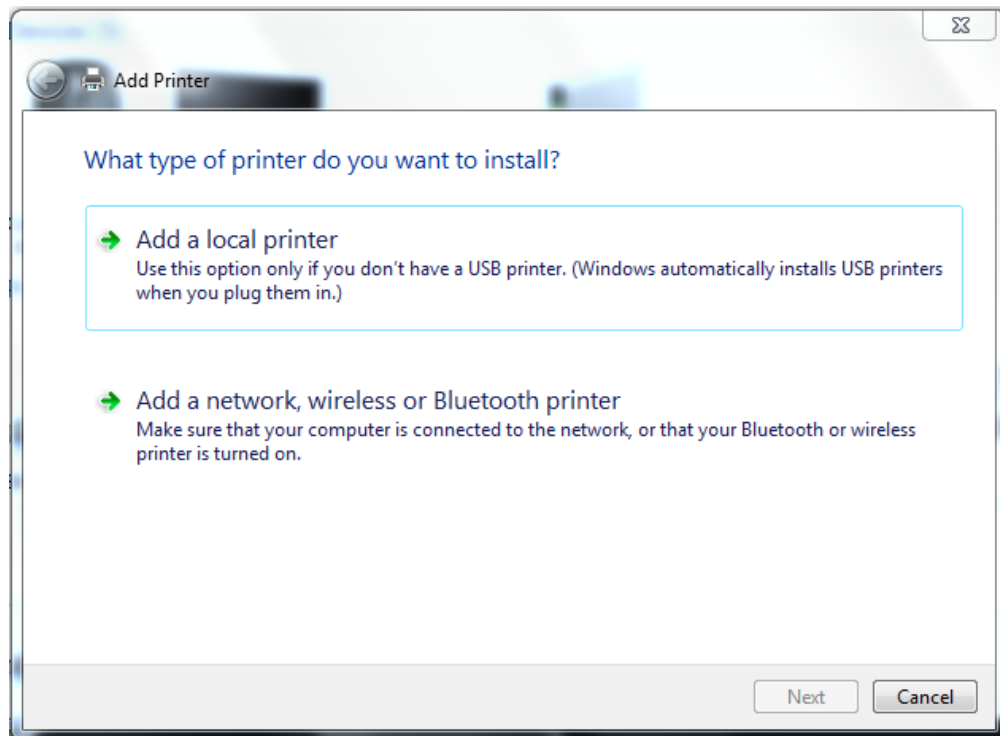


How to set up a Printer on Windows 7 for the MRMS LMC.

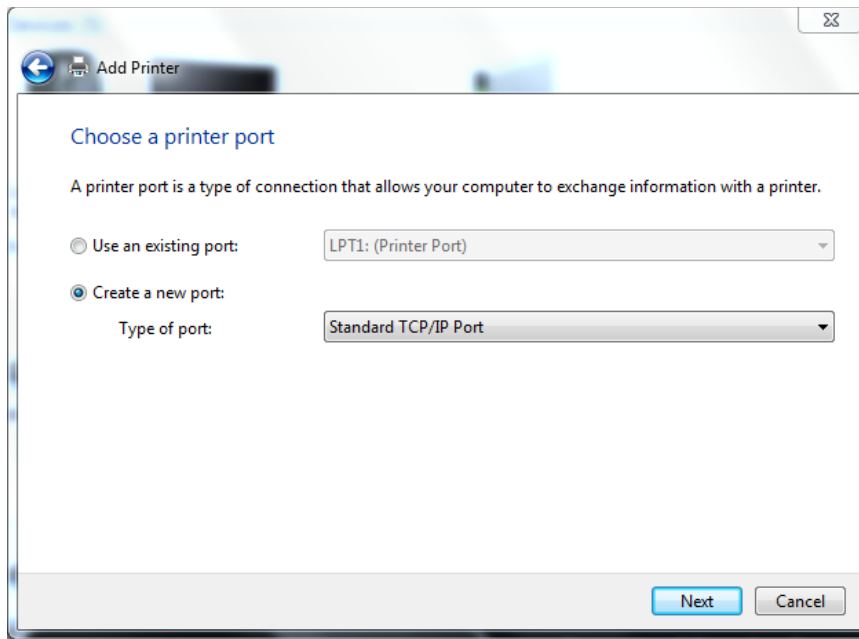
1. Click on the start button, then Devices and Printers.
2. That should get you here.



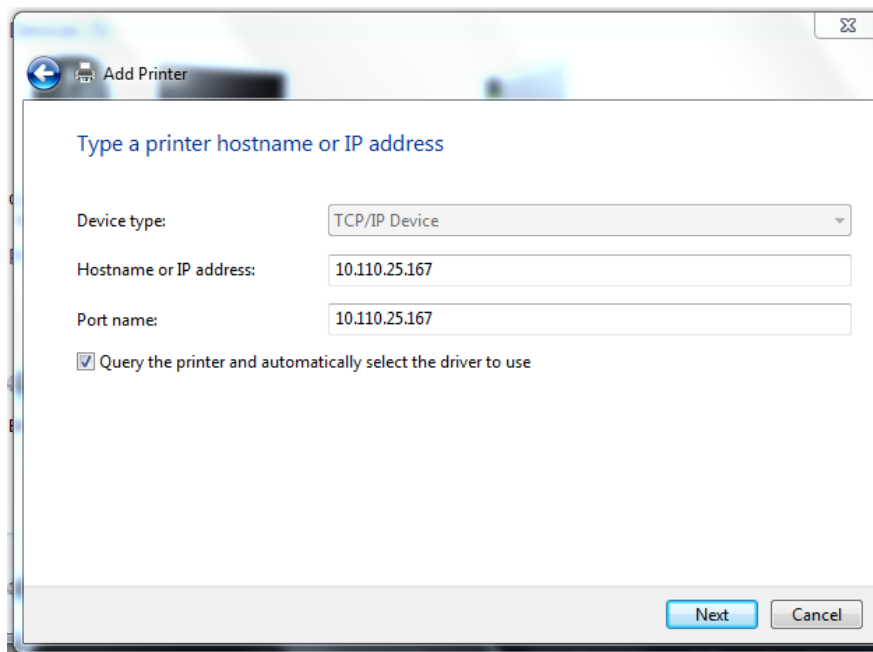
3. Click on add a printer. That will bring you to this window.



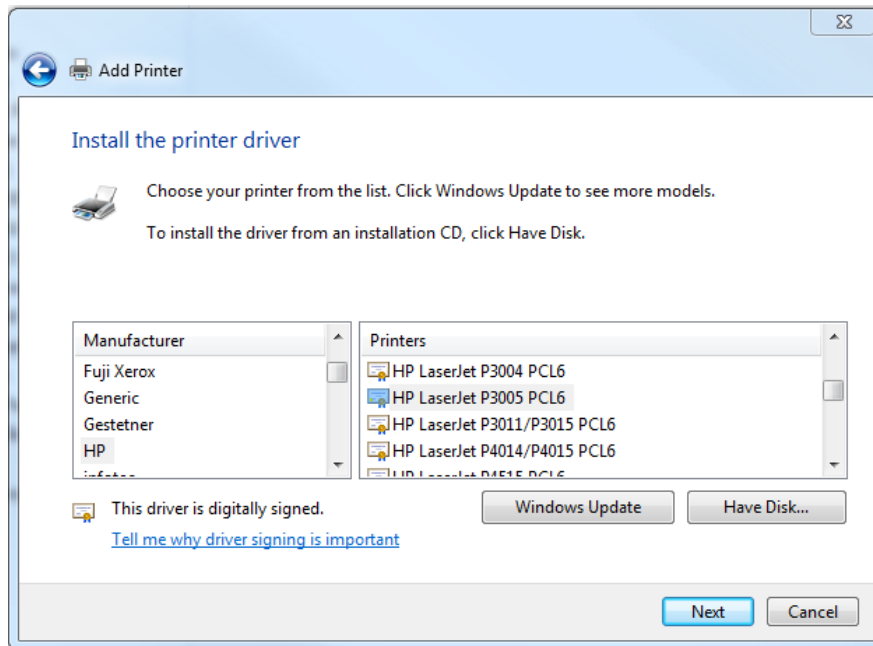
4. Click on “Add a local printer” and then select a printer port.



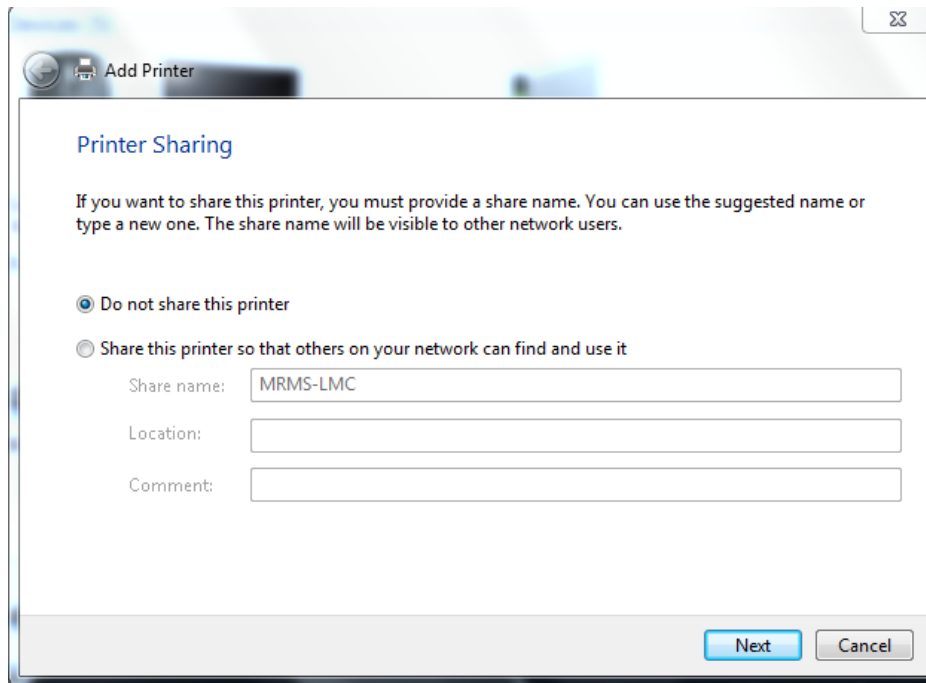
5. We will chose “Create a new port” We will use “ Standard TCP/IP Port”
Then click next and then next again at the “Add Standard TCP/IP Printer Port wizard”
6. We will then enter the IP Address of the printer of the LMC HP P3005 printer. That IP for this printer is 10.110.25.167 just like the window below.



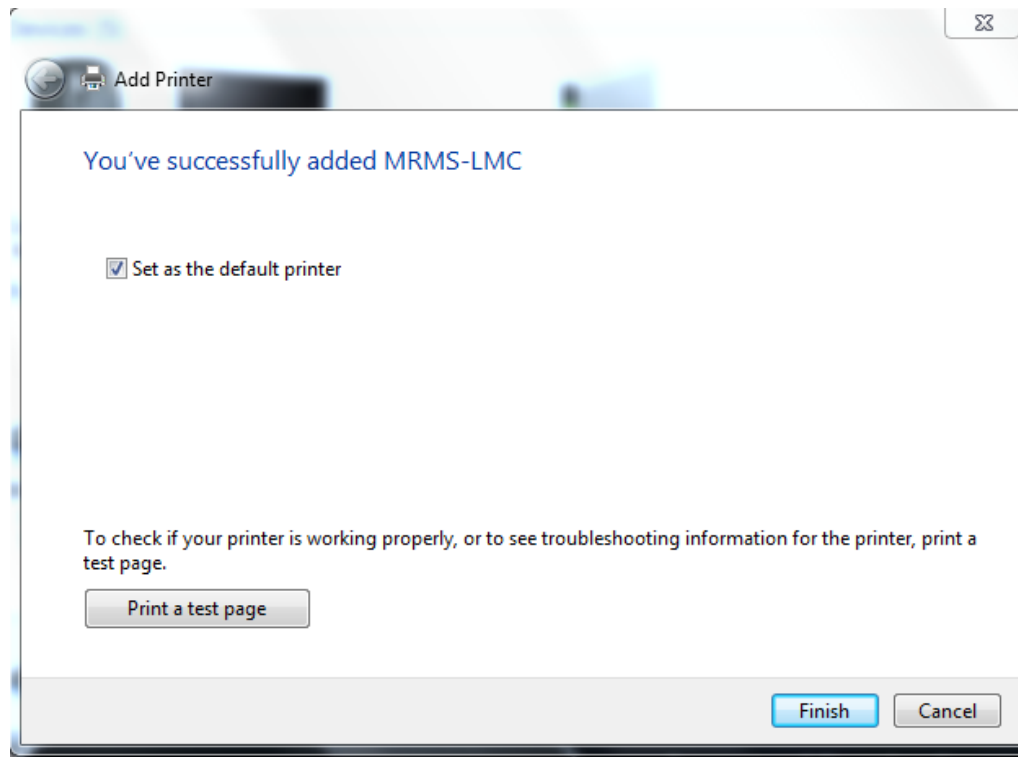
7. Click next and then Finish. If it asks {it may not} chose the HP P3005 driver from the list.



8. If it asks, "Use the driver that is currently installed" and then click next.
9. We will then name the printer "MRMS-LMC" and click next. We will not share.



10. Click next one more time. And then click Finish one more time. You do not need to print a test page out but you may do so if you like. Do set as the default printer.



11. It should now be setup in your "Devices and Printers" location as "MRMS-LMC"

I know it looks like a lot but you should be able to set this printer up in well under five minutes.